



## Summer Guest Information Package

### Trip Logistics and Getting to Purcell Mountain Lodge

We look forward to hosting you at Purcell Mountain Lodge. We fly with Alpine Helicopters based out of Golden BC. A Purcell Lodge Stager & Expediter will greet you at the hangar on the day of your departure. A final confirmation of your flight time will be sent to Andrea within two weeks of your trip. Guests are typically asked to arrive at the hangar at 7:15 a.m. We are on **Mountain Standard Time**, the same time zone as Calgary. We will meet early to give us time to weigh the baggage, fill out and sign the waivers and receive a helicopter safety talk. Please review the self guided waiver on the last page, a paper copy will need to be signed and witnessed at the hangar. Your trip begins with a spectacular fifteen minute helicopter flight over stunning mountain ranges, tumbling glaciers and breathtaking views.



**Alpine Helicopters Hangar**  
204 Fisher Road Golden, B.C. V0A 1H0  
Phone: 250 344 7444

### Directions:

When you arrive in Golden from the Trans- Canada Highway, take the overpass into town. You will find yourself on HWY 95 South (also called 10<sup>th</sup> Ave). Pass the business section of town on your right, cross the old trestle bridge and proceed to the traffic lights at the intersection of 9<sup>th</sup> Street. You will see a sign indicating the airport. Follow the sign, by turning onto 9<sup>th</sup> Street. Proceed along its entire length to 5<sup>th</sup> Avenue. Again, follow the airport signs by turning right. Drive along the road and bear left as the road becomes Fisher Road. You will drive over the train tracks and continue down the road till you see Alpine Helicopters.

Helicopters have a very limited capacity. For your safety, we must limit your baggage to a maximum of 25 pounds per person. We do not offer an overweight baggage allowance. The dress in the lodge is very casual, and you will need a basic wardrobe. All linens, towels, biodegradable soaps and shampoos are provided. We even have a hair dryer for your use if you need one. You need to bring only your hiking boots, some outdoor clothing, and a few personal effects.



A single large expedition pack, or any type of regular suitcase, is not acceptable for transporting luggage in the small cargo area of our helicopters. A small soft shell duffel bag is best for personal belongings and a small day backpack. Two bags maximum per person not including outdoor gear such as hiking poles.



### What to Bring for your Mountain Getaway

The easiest way to pack for a helicopter, and stay within your weight allowance, is to organize your day backpack so it is ready to take for your day hikes. Please come to the helicopter hangar dressed for your first day of outdoor activity. Use a soft shell sports bag to pack any additional casual clothes, slippers, toiletries, and other items.

Purcell Mountain Lodge provides doorstep access to a wide variety of trails and meadows suitable for all levels of ability and ambition. Following is a brief overview of the equipment you will need to bring to the Lodge.



### Lodge Clothing:

- One or two changes of casual clothing;
- Slippers or soft soled (non-scuff) house shoes;
- Pyjamas;
- Bathing suit for the sauna.



### Toiletries:

- Toothbrush, toothpaste and dental floss;
- Personal grooming and sanitary supplies;
- Personal medications;
  
- Personal first aid supplies -bandages, aspirin, decongestant, moleskin, lozenges, etc.



### Miscellaneous Items:

- Eyeglasses, contact lenses with spares;
- Camera and spare batteries;
- Book to read (we do have a well-stocked library)
- Waterproofing for boots;
- Compact binoculars (optional);
- Money or charge card for miscellaneous purchases (cash bar & gift shop).



### Outdoor Essentials:

- Daypack for camera, lunch, spare clothing, etc.;
- Water bottles (Need two to three liters per day);
- Sunglasses;
- Lip balm and sunscreen;
- Insect repellent;
- Whistle;
- Pocket knife;
- Matches/lighter;
- Toilet paper (waterproof bag or container);
  
- Bear spray (optional).

### General Hiking Equipment:

- **Sturdy waterproof over-the-ankle hiking boots;**
- Gators to seal top of boots; (option great to have for rainy days)
- Hiking poles.



### Outdoor Clothing: Stay dry synthetics are superior to cotton.

- Underwear (synthetic preferred);
- 1 set light weight long underwear for cold weather;
- Regular socks;
- Synthetic or wool hiking socks (several pairs);

- Lightweight long-sleeved poly/nylon, wool, or micro fleece shirt;
- Light fleece or wool sweater;
- Light weight (non cotton) hiking or wind pants;
- Shorts;
- T-Shirts;
- Vented windbreaker jacket;
- Rain jacket or poncho, rain pants, and rain hat;

**Additional Items for your Day Backpack:**

- Warm hat and gloves (for cool, windy conditions);
- Baseball cap / sun hat;
- Wind pants, or fleece pants, as extra layer if wearing shorts.;
- Closed cell foam sit pad (optional).

**Purcell Mountain Lodge Provides:**

- Biodegradable Rocky Mountain Soap Company soap and shampoo;
- Towels (Bath, hand & face) and bedding;
- Hair dryers
- Self serve cash bar - No outside alcohol permitted



**What to Expect Upon Arrival at Purcell Lodge**

The Lodge Host/s and Chef will welcome you upon arrival. You will commence enjoying the spectacular view of your mountain home. A continental breakfast will be available. The Guides will be unloading the helicopter - baggage, food supplies and stock while the Lodge Host/s will help get you settled into your accommodations. After all the flights arrive, the Guides may have a brief meeting to discuss the hiking plan for the day. Everyone will then convene in the living room for a warm welcome & introduction. Bagged lunches will be packed shortly after and you will be off on your first day's hiking adventure!

**Suggested Accommodations in Golden, BC**

Our helicopter flight departs early on Friday and Monday morning into the Lodge. It is suggested that you stay in Golden the evening prior to departure. The meeting time is usually at 7:15 a.m.. A final reminder and meet at the hangar time notice will be sent to you within two weeks of your tour. The hangar address is 204 Fisher Road, Golden B.C. V0A 1H0.

**Prestige Inn Golden**

Special rate \$149.95 for standard room for Purcell Mountain Lodge guests, just quote your Purcell trip date to guarantee the deal! Just off the Trans Canada highway, it features on-site dining and in-door pool with hot tub.  
<http://www.prestigehotelsandresorts.com/locations/golden/overview/>  
 1049 Trans Canada Highway, Golden BC  
 1 250 344 7990

**Holiday Inn Express Golden Kicking Horse**

Complimentary hot breakfast, pool, large hot tub, fitness room, business center, free wi-fi  
<http://www.ihg.com/holidayinnexpress/hotels/us/en/golden/yrvgo/hoteldetail>  
 1120 14 Street North Golden BC V0A 1H0  
 1 250 344 4664

### **Glenogle Lodge**

Caring hosts, great feedback from guests with 10 rooms, 5 cabins and lots of amenities such as massage.

<http://www.glenoglelodge.com/>

913 Oster Road Golden BC V0A 1H0

1 250 344 7638

### **Cedar House Chalets**

Unique property to the Golden area and Owner Operated by Darrin Derosa.

Features a fine dining restaurant onsite.

Features a full kitchen, living room, dining room, fireplace and private hot tub.

[www.cedarhousechalets.com](http://www.cedarhousechalets.com)

735 Hefti Road Golden BC V0A 1H2

1 250 260 0001

### **Auberge Kicking Horse B&B**

Over 20 years hospitality experience, skiers, clean rooms and international flair.

[www.aubergekickinghorse.com](http://www.aubergekickinghorse.com)

1306 Selkirk Drive Golden BC V0A 1H6

1 250 344 3997

### **Tschurtschenthaler Lodge**

Views, international flair [www.tschurtschenthalerlodge.com](http://www.tschurtschenthalerlodge.com)

722 Alberg Road Golden BC V0A 1H2

1 250 344 7325

### **Home Lodge**

Large rooms with up to date amenities. <http://www.homeinkickinghorse.com/eating.html>

869 Barber Road Golden BC V0A 1H1

1 250 344 0693

### **Golden Chamber of Commerce**

A complete list of accommodations in Golden B.C. <http://www.goldenchamber.bc.ca>

### **Guided Daily Hikes at Purcell Mountain Lodge**

- Coffee is ready by 7:00 a.m. Take a cup out on the deck and listen to the songbirds greet the morning. Help yourself to an exercise mat and do some stretching or yoga out on the deck. Cozy up in the living room with your summer novel and finish that chapter you fell asleep in the middle of last night;
- Hot breakfast is served at 8:30 a.m. or as advised by Andrea and served family-style, and there are baskets of freshly baked muffins or scones, lodge made granola and hot cereals as well as daily entrées such as seafood quiche or sausages and frittatas for you to get a good healthy start to the day;
- Before breakfast, between 7:30 - 8:00 a.m. there is a fresh prepared lunch buffet presented and you are invited to build your own lunch. Items include lodge made breads and rolls, sandwich fixings of all descriptions, a variety of fresh fruit in season, Lodge made cookies and other baked goodies; trail mixes and maybe even some leftover dessert items from the night before.



- At breakfast time depending on the ability and desire of the guests, a couple of complimentary, guided hiking options are usually available. Choices range from a gentle wander through the alpine flowers on our expansive meadows, to hiking the trails through the woodlands, to the "full-on pursuit of maximum fun" along our outstanding mountain ridges. Your day can be as leisurely or challenging as you wish, and of course, you are welcome to go off on your own if you prefer some privacy. Guests wanting to explore the terrain on their own must sign a self guided waiver at the Lodge. We generally head out on the trail by 10:00 a.m.;
- Back at the lodge by approximately 4:00 p.m., cocktail hour begins, and there are a variety of beers and wines available from our self serve bar. Appetizers are served upon arrival back and then guests will have a shower, take a sauna, nap, play games or relax on the decks or in the living room;
- Dinner is served at approximately 7:30 p.m. We start with a soup or salad and fresh bread or rolls, followed by a plated dinner including meat, poultry or fish. Our cuisine is always healthy and hearty with a flair for modern appetites. Please advise of any food restrictions if you have not already done so. Volunteer guests are asked to please take turns helping with clearing the table and washing dishes after dinner. Together we can tackle the clean up quickly. Thank you for your help and cooperation;
- The private group will take turns helping in the kitchen with dishes and clean up after meals.

### **Communication**

There is very limited Wi Fi for staff only and no cellular service at Purcell Mountain Lodge. We encourage guests to disconnect during their stay. Limited cellular service can be obtained in certain high points on the terrain. If you require Wi Fi access please advise us in advance of your visit;

The toll free number 1 888 767 8989 can be left as a 24 hour emergency contact number for your loved ones. If you have any concerns about outside communication please touch base with Andrea Petzold or Jackie Mah, Purcell Mountain Lodge General Manager at [jackie@purcellmountainlodge.com](mailto:jackie@purcellmountainlodge.com) for further assistance in advance of your visit.

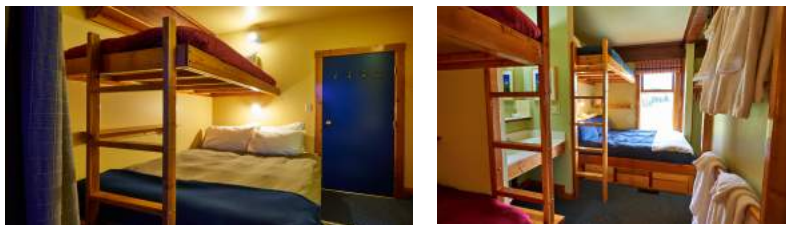
### **Planning for Departure Day from Purcell Mountain Lodge**

Bar tabs will be tallied after dinner on the evening prior to departure day;

Souvenirs purchases may be added to the bar tabs;

All gratuities are entirely at a guest's discretion. Gratuities may be added to your bar tab which are paid by credit card on the evening prior to your departure. Cash gratuities offered will be gratefully accepted by the Lead Guide and will be shared equally among all the Purcell family that hosted your stay. Guests may also choose to offer more gratuities to a particular person and in these incidences, separate marked envelopes with the staff member's name is the best manner to distribute.

Guests are kindly requested to depart their rooms no later than 7:15 a.m. and help prepare the rooms for the next guests. Please assist our Purcell family by removing the used pillow cases, flat and fitted sheet in preparing for the next group. The bedding will need to be neatly folded into one pillowcase and the towels neatly folded into the other pillowcase. The small package helps our Purcell family to be able to efficiently transport the laundry down to Golden for washing. Please make up the bed for the next guest as shown, all the bedding can be found in the drawers in each room. The towels can also be placed on the towel rack as shown.



The first flight to depart Purcell Lodge will be at approximately 8:30 a.m. Guests will be transported 6 at a time while new guests are flying into the Lodge. If you have a flight to meet please advise us in advance and we will do our best to ensure you are on the first departing helicopter. All departure flights are completed no later than 10:30 – 10:00 a.m. weather pending.

**Cancellation Policy**

All trip payments are non-refundable. This includes, but is not limited to, inability to enter the country, travel complications, sickness, injury, family illness and poor weather conditions.

**Release of Liability Requirement**

Purcell Mountain Lodge guests are required to sign a Release of Liability waiver and cannot be altered changed or modified. Please review the waiver carefully at home to be sure you have a clear understanding of it before you sign; If you are not willing to sign the waiver in its present form, you will not be permitted to board the helicopter; Your trip will be cancelled without refund; The waiver must be signed at the hangar/staging area prior to boarding; Your signature must be witnessed by a Purcell Lodge Stager/Expediter or Purcell Lodge staff member.

**SUMMER PLACES LESS TRAVELLED LTD. o/a Purcell Mountain Lodge SELF-GUIDED**

**RELEASE OF LIABILITY, WAIVER OF CLAIMS,  
ASSUMPTION OF RISKS AND INDEMNITY AGREEMENT  
(hereinafter the "Release Agreement")**

**BY SIGNING THIS DOCUMENT YOU WILL WAIVE OR GIVE UP CERTAIN  
LEGAL RIGHTS, INCLUDING THE RIGHT TO SUE OR  
TO CLAIM COMPENSATION FOLLOWING AN ACCIDENT**

**PLEASE READ CAREFULLY!**

Initial of Guest

<b>Name</b>	Last		First	Middle Initial
	<b>Address</b>			
Street				
City			Prov/State	Postal/Zip Code
<b>Email Address</b>			<b>Telephone</b>	Work
			Home	
<b>Date of Birth</b>	Year	Month	Day	<b>Age</b>
<b>Trip Dates</b>	Year	Month	Day	<b>to</b>
	Year	Month	Day	Year Month Day

**TO: PLACES LESS TRAVELLED LTD., Her Majesty the Queen in the Right of the Province of British Columbia, Purcell Mountain Lodge, Individual, Backcountry Lodges of BC Association, Alpine Helicopters Inc., Other** and their directors, officers, employees, guides, agents, independent contractors, subcontractors, representatives, successors, assigns and guests (all of whom are hereinafter collectively referred to as "the Releasees")

**DEFINITION**

In this Release Agreement, the term "**wilderness activities**" shall include but is not limited to: hiking, nature study, snow sports, touring, mountaineering, rock or ice climbing, expeditions, trekking, glacier travel, mountain biking, horseback riding, swimming, boating, fishing, watersports, and all activities, services and use of facilities either provided by or arranged by the Releasees including orientation and instructional sessions or classes, transportation, accommodation, food and beverage, water supply, rescue and first aid services, and all travel by or movement around vehicles, helicopters, other aircraft, horses and pack animals, all terrain vehicles, watercraft or other vehicles.

**ASSUMPTION OF RISKS – UNSTABLE SLOPES, MOUNTAIN TERRAIN, WILDERNESS TRAVEL, WEATHER**

I am aware that participation in wilderness activities, involves many risks, dangers and hazards. Rock, snow, or ice falls and mudslides occur frequently in the terrain used for wilderness activities and may be caused by natural forces or by persons travelling through the terrain. I am aware that the Releasees may fail to predict whether the terrain is safe for use or travel. The terrain used for wilderness activities is uncontrolled, unmarked, not inspected, and involves many risks, dangers and hazards. These may include, but are not limited to: snow cornices; crevasses; cliffs; falling trees; creek or river crossings; cold water; high winds; lightning; loose or unstable rocks, boulders, ice, snow, roots and fallen logs; forest fires; slippery and difficult ground and travel conditions; hypothermia; snow immersion: effects of high altitude including pulmonary edema and cerebral edema; equipment failure; encounters with domestic and wild animals; slips, falls and impacts or collision with other persons, animals, equipment, or objects; becoming lost or separated from one's party or guide; negligent first aid; negligence of other persons, including other guests and **NEGLIGENCE ON THE PART OF THE RELEASEES. I UNDERSTAND THAT NEGLIGENCE INCLUDES FAILURE BY THE RELEASEES TO TAKE REASONABLE STEPS TO SAFEGUARD OR PROTECT ME FROM THE RISKS, DANGERS AND HAZARDS OF WILDERNESS ACTIVITIES.** Communication in the wilderness may be difficult, and in the event of an accident or illness, rescue, medical treatment and evacuation may not be available or may be delayed. Mountain weather conditions may be extreme and can change rapidly and without warning.

**I AM AWARE OF THE RISKS, DANGERS AND HAZARDS ASSOCIATED WITH WILDERNESS ACTIVITIES AND I FREELY ACCEPT AND FULLY ASSUME ALL SUCH RISKS, DANGERS AND HAZARDS AND THE POSSIBILITY OF PERSONAL INJURY, DEATH, PROPERTY DAMAGE OR LOSS RESULTING THEREFROM.**

**NON-SCHEDULED OR EMERGENCY EVACUATION, RESCUE OR FIRST AID**

I acknowledge and agree that all expenses associated with non-scheduled or emergency evacuation, rescue or first aid will be my responsibility and will not be covered by the Releasees.

**NOTICE TO SELF-GUIDED PARTIES**

1. All wilderness activities in your program will be entirely self-guided. Guiding services will not be provided by the Releasees.

3. Self-guided parties must have experience in travel over mountainous terrain. It is the self-guided party's responsibility to learn about the nature and degree of challenge of the terrain and ensure that all members of the self-guided party are capable of safe backcountry travel in such terrain.
4. Self-guided parties must be completely self-sufficient and be capable and experienced in wilderness and mountain route finding, rescue, and wilderness first aid.
5. All self-guided parties must have the following equipment and be experienced in its use:
  - Compass and/or GPS w/spare batteries
  - Topographical maps
  - Bear Spray and/or Bear Bangers
  - First aid equipment
  - Emergency shelter and survival gear
  - Emergency communication equipment
6. It is the self-guided party's responsibility to ensure that all emergency communications equipment is operational and that back-up communications equipment has been provided by the party.
7. A lodge attendant may be provided to assist in the running and maintenance of the lodge. The lodge attendant is not permitted to provide self-guided parties with guiding services or advice. By invitation of the self-guided party, the lodge attendant may join the party for backcountry travel; however in no such case will the lodge attendant serve in the role of guide to the self-guided party.
8. Self-guided parties must leave a daily trip plan at the lodge before departing each morning.
9. Self-guided parties are responsible for maintaining a call-in schedule as previously arranged with the lodge.
10. Use of a backcountry lodge may involve risks, dangers, and hazards not normally found in commercial rental properties, including but not limited to: steep, narrow and slippery stairs, ladders, or walkways; inadequate lighting; alternate energy systems; wood or propane burning appliances; gas or liquid fuel lighting fixtures; and other features that may present increased risk to the occupants. Self-guided parties must familiarize themselves with the facilities provided, and not use any tools, equipment, or appliances until they are fully satisfied that they understand their safe operation.

**RELEASE OF LIABILITY, WAIVER OF CLAIMS AND INDEMNITY AGREEMENT**

In consideration of the Releasees allowing me to participate in wilderness activities as defined in this Release Agreement, and for other good and valuable consideration, the receipt and sufficiency of which is acknowledged, I hereby agree as follows:

1. **TO WAIVE ANY AND ALL CLAIMS** that I have or may in the future have against the Releasees and **TO RELEASE THE RELEASEES** from any and all liability for any loss, damage, expense or injury including death that I may suffer, or that my next of kin may suffer as a result of my participation in wilderness activities, DUE TO ANY CAUSE WHATSOEVER, INCLUDING NEGLIGENCE, BREACH OF CONTRACT, OR BREACH OF ANY STATUTORY OR OTHER DUTY OF CARE, INCLUDING ANY DUTY OF CARE OWED UNDER THE **OCCUPIERS LIABILITY ACT**, R.S.B.C. 1996, c. 337, ON THE PART OF THE RELEASEES. I UNDERSTAND THAT NEGLIGENCE INCLUDES FAILURE ON THE PART OF THE RELEASEES TO TAKE REASONABLE STEPS TO SAFEGUARD OR PROTECT ME FROM THE RISKS, DANGERS AND HAZARDS OF WILDERNESS ACTIVITIES REFERRED TO ABOVE;

2. TO HOLD HARMLESS AND INDEMNIFY THE RELEASEES from any and all liability for any property damage or personal injury to any third party resulting from my participation in wilderness activities;
3. This Release Agreement shall be effective and binding upon my heirs, next of kin, executors, administrators, assigns and representatives, in the event of my death or incapacity;
4. This Release Agreement and any rights, duties and obligations as between the parties to this Release Agreement shall be governed by and interpreted solely in accordance with the laws of the Province of British Columbia and no other jurisdiction; and
5. Any litigation involving the parties to this Release Agreement shall be brought solely within the Province of British Columbia and shall be within the exclusive jurisdiction of the Courts of the Province of British Columbia.

In entering into this Release Agreement I am not relying on any oral or written representations or statements made by the Releasees with respect to the safety of wilderness activities, other than what is set forth in this Release Agreement.

**I CONFIRM THAT I HAVE READ AND UNDERSTOOD THIS RELEASE AGREEMENT PRIOR TO SIGNING IT, AND I AM AWARE THAT BY SIGNING THIS RELEASE AGREEMENT I AM WAIVING CERTAIN LEGAL RIGHTS WHICH I OR MY HEIRS, NEXT OF KIN, EXECUTORS, ADMINISTRATORS, ASSIGNS AND REPRESENTATIVES MAY HAVE AGAINST THE RELEASEES.**

Witness's Signature	Guest's Signature
Witness's Printed Name	Guest's Printed Name
Date	Signature of Parent or Guardian if guest is under age 19

